

INFORMATION REGARDING ELECTRIC WHEELCHAIR PRESCRIPTION

Loan of electric wheelchair

You have received an electric wheelchair prescribed by a municipality or the county council of Östergötland. To borrow equipment from the county Healthcare is for personal use and may not be transferred or lent to other people. With the aid loans are the responsibility of the prescribed means. As for children and young people under 18 are responsible parents/guardians.

Damage, theft or careless handling of the electric wheelchair will not be replaced by the county Healthcare. You are advised to review your insurance coverage.

You agree that you will cherish your wheelchair properly, and follow the instructions given in connection with the prescription. It also means that you must follow the traffic rules that apply to driving an electric wheelchair and described in this paper.

Parents/guardians are responsible for children above the prescribed electric wheelchair in a controlled environment and does not constitute a danger to themselves or others in the transport/environment.

You are responsible for the costs of repairing a flat tire on the electric wheelchair, and supplies electric wheelchair, for example, tire and tube, and other accessories and items that are outside the county Healthcare's responsibility.

In need of repair/maintenance or replacement of tires and tubes on your electric wheelchair, call directly to the council aids supplier Aids Centre/Sodexo Hjälpmedelsservice and agree on time. The Aids Center can be reached at tel. 013-27 78 00, on weekdays. 8:00 a.m. to 4:30 p.m.

To get an electric wheelchair prescribed by a municipality or the county council must Accessibility Guide/Östergötlands Acquis be followed and the criteria of electric wheelchair prescriptions must be satisfied.

Follow-up

According to Östergötlands Acquis/Accessibility Guide prescribers should follow up on each prescription of electric wheelchairs. In addition, an annual review of all electric wheelchair prescriptions. The county Healthcare will therefore be in touch with you every year to monitor the electric wheelchair is working and used as intended, and that you as the user is still eligible to keep your electric wheelchair.

Drop-off

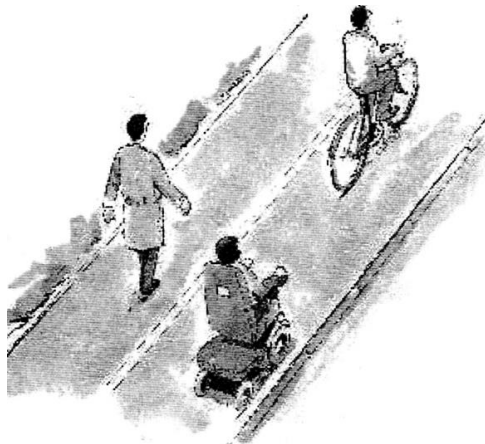
You are, however, responsible for ensuring that urgently make contact with the occupational therapist at your municipality/county Council, to arrange the return of electric wheelchair if your need is terminated, changed or if you intend to move from Östergötland.



INFORMATION REGARDING ELECTRIC WHEELCHAIR PRESCRIPTION

As ROAD-USER, you are obliged to know the applicable rules of the driving electric wheelchair and obey them. This means that you:

- Should behave so as not to unduly disrupt or impede traffic
- Should obey all traffic directions (road signs, traffic signs, traffic signals)
- Not allowed to drive electric wheelchair if you are under the influence of such alcohol or medicine



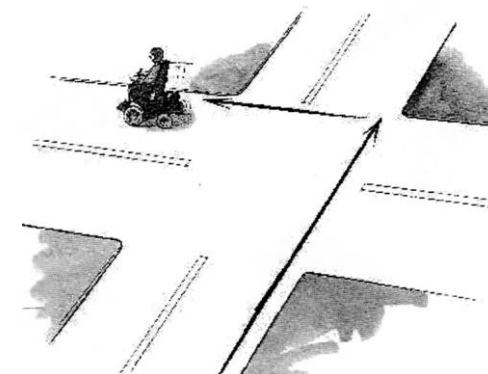
Here are the main rules of the road

- If you do not drive faster than normal walking speed (about 4 km / hour) you are considered a pedestrian, which means that you should drive on the roadway as far left as possible. You should be driving on the sidewalk and use the crossing. It is the best and safest way to get around with power wheelchair in traffic.

- If you drive faster than walking speed, follow the same rules as a cyclist. You will use bicycle path, when cycle path is missing, run on the road as far right as possible.
- If there are bike lanes on both sides of the road you drive on the right, in terms of your direction of travel.
- You may not drive on the freeway or expressway.
- You may not run side by side with another wheelchair or bicycle.

The intersections

- When you run in walking speed, use pedestrian crossings and wait for the green man, just like pedestrians.
- If you drive faster than walking speed, follow the traffic rules for cyclists. At the right turn, you use the direction indicator in a timely manner and keep as far right as possible. At left, do the "big bend" - run straight through the intersection to the opposite side, then turn left where it is free and you do not impede other road users. Use sidewalk and pedestrian crossing if you can.



INFORMATION REGARDING ELECTRIC WHEELCHAIR PRESCRIPTION

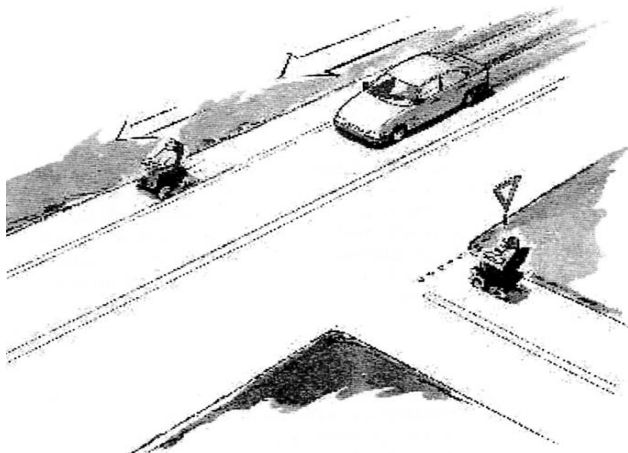
Show change of direction

When you drive out from the edge, turn or flip, you must provide timely indication with the wheel chair direction indicator.

Yield

In these situations, you should give way to other road users:

- When other vehicles coming from the right, "right" rule.
- When you hit the main road. There are often traffic signs indicating when to give way.
- When you run out of the parking lot, property and the like.
- When you come from the bike path on the roadway.
- Where will emergency vehicles with sirens and turned blue.



Parking

You can unlike other vehicles park electric wheelchair on a sidewalk if the electric wheelchair does not hinder pedestrian or transport to and from properties. But you must stop or park so that danger or traffic disrupted are prevented. This means for example that you can not stop at intersections, at pedestrian crossings, hill or on curves. You must not park within the marked area at a bus stop.

Load

Only you and less load (such as groceries) are allowed to run with the electric wheelchair, see instructions. If you're not sure about traffic rules, or find it unpleasant to drive in traffic, then drive rather slowly (up to 4 km per hour) on the sidewalk as pedestrians. It's safer that way.

Trafikregler enl utdrag ur skriften "Din elrullstol" från Hjälpmedelsinstitutet, 2004